

# Selkirk College Fast Facts 2023/24



Selkirk College has eight campus and learning centre locations in the West Kootenay and Boundary regions. It offers outcomes for in-demand employment, credit transfer to a multitude of post-secondary institutions and enhanced training to further career opportunities. A mix of in-person, hybrid delivery and online programming supports student access, and reaches students in the college region, BC, Canada and around the world.

## Our Students



**1,574**

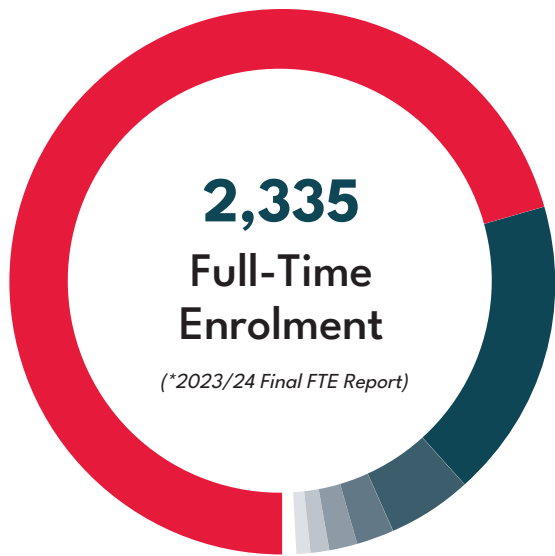
Domestic



**760**

International

- **392** India
- **113** Philippines
- **48** Nigeria
- **38** China
- **26** South Korea
- **18** Japan
- **16** Mexico

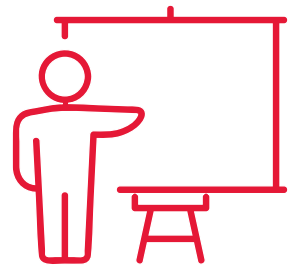


## Student Outcomes



**93%**

of students were satisfied with their education at Selkirk College



**96%**

of students reported a high quality of instruction

(\*BC Student Outcomes survey of diploma, associate degree and certificate students)

## Student Ages



**11%**

<18:

**18%**

19-21

**34%**

22-30

**25%**

31-45

**12%**

46+

(\*SRS Enrolment Management Report, as of October 1, 2023)

Selkirk College acknowledges the traditional territories of the Sinixt (Lakes), the Syilx (Okanagan), the Ktunaxa and the Secwépemc (Shuswap) Peoples.



# Selkirk College Fast Facts 2023/24

## Regional Impact

### Employees



**456**

**319**

70% Full-time

**135**

30% Part-time

**1 in 12 jobs** in the region supported by the activities of Selkirk College and its students

*(\*2019 EMSI Economic Impact Study)*

**\$18 million** in research and innovation activities

*\*Five-Year Key Performance Measures (FY2020–FY2024)*

### Revenue Sources



**\$59.1 million**

Total Revenue Sources

**58%** Government Grants

**12%** International Tuition

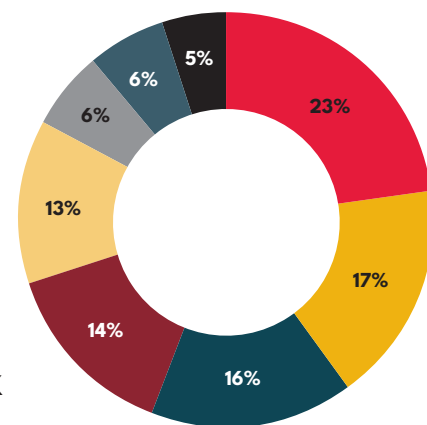
**9%** Domestic Tuition

**16%** Contracts/Other

**3%** SkilledTradesBC

**1%** Donations

*(selkirk.ca/financial-statements)*



### Program Mix

**23%** Business & Tourism

**17%** Health & Human Services

**16%** Adult Upgrading

**14%** Trades & Industry

**13%** University Transfer

**6%** Arts & Technology

**6%** Environment & Geomatics

**5%** Continuing Education

*(\*Based on student FTEs, 2023/24)*

### Student Financial Support



SELKIRK COLLEGE  
FOUNDATION



**631**

Total students supported annually



**\$1,544,519**

Amount of donations received in last fiscal year